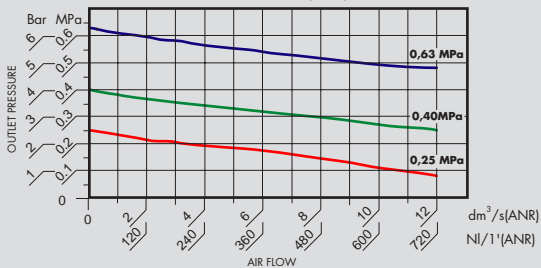
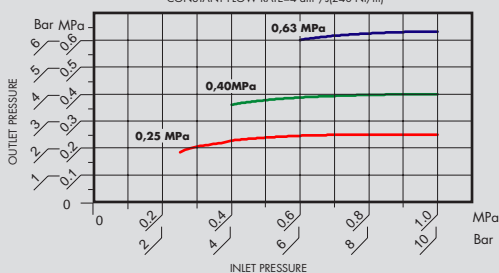


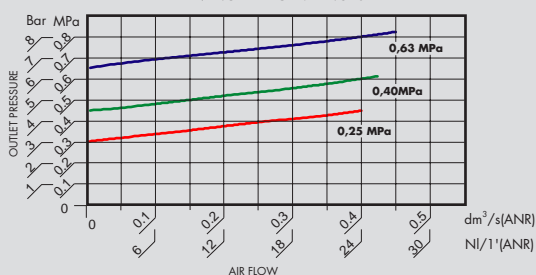
FLOW CHARTS  
INLET PRESSURE = 1 MPa [10 Bar]



REGULATION FEATURES  
CONSTANT FLOW RATE = 4 dm³/s [240 NI/min]



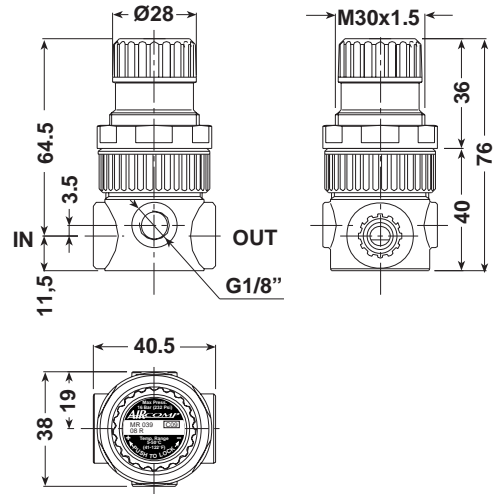
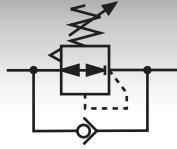
RELIEVING PERFORMANCES



## Precision Microregulator

Sensitive high performance model with rolling diaphragm; high stability with low load losses and big flow rate.

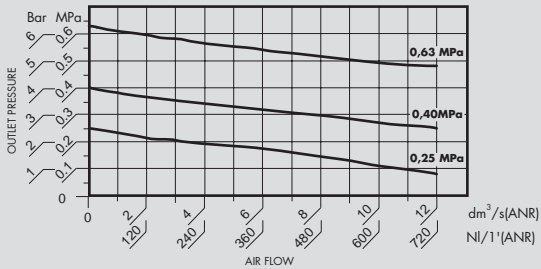
- \* Downstream overpressures quickly eliminated.
- \* Can be wall mounted with ring nut for panel assembling or, on request, with bracket.
- \* Usable on version for air (with relieving and red knob) or for water (without relieving and black knob).
- \* Lockable safety knob.
- \* Pressure ranges:  
0÷2 Bar, 0÷4 Bar, 0÷8 Bar (standard), 0÷12,5 Bar  
0÷0,2 MPa, 0÷0,4 MPa, 0÷0,8 MPa (standard), 0÷1,25 MPa
- \* Maximum inlet pressure: 16 Bar (1,60 MPa).
- \* Temperature range: 5÷50°C (41÷122°F).
- \* Max. torque inserts G1/8" IN-OUT: 20 N·m.
- \* Max. torque inserts G1/4" IN-OUT: 25 N·m.
- \* Reference flow rate (P=6,3 Bar - Δp=1 Bar): 450 NI/min.
- \* Weight: 0,100 Kg.
- \* Are available other two versions:  
(FA) provided with a CONTROLLED AIR ESCAPE which is able to achieve highly accurate pressure adjustment.  
(SR) provided with a FAST BLOWDOWN mounted between valve and actuator; this device allows a rapid discharge when inlet pressure is stopped.



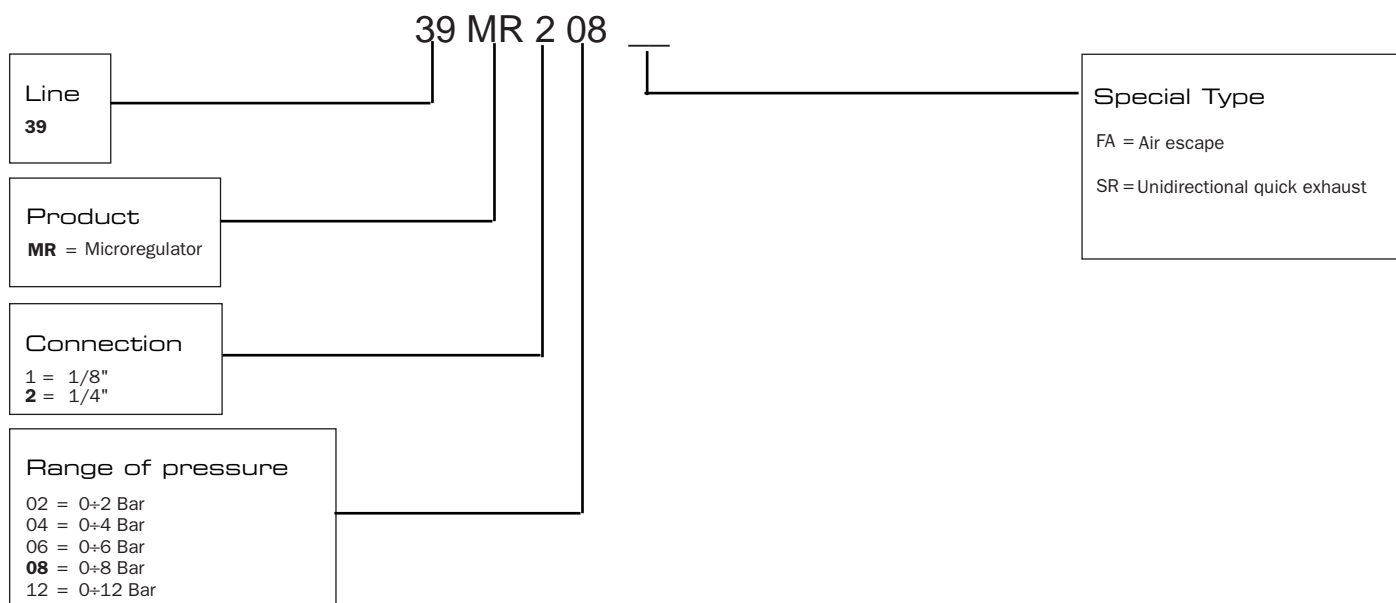
## Unidirectional microregulator quick exhaust

- \* This particular regulator model allows downstream quick exhaust when inlet pressure drops. Infact, thanks to the unidirectional valve within the regulator, the circuit can be relieved very quickly. This feature is specially recommended when regulator is mounted between valve and actuator, in order to regulate inlet pressure without affecting exhaust speed.
- \* Sensitive high performance model with rolling diaphragm.
- \* Can be wall mounted with ring nut for panel assembling or, on request, with bracket.
- \* Lockable safety knob.
- \* Pressure ranges:  
0÷2 Bar, 0÷4 Bar, 0÷8 Bar (standard), 0÷12,5 Bar  
0÷0,2 MPa, 0÷0,4 MPa, 0÷0,8 MPa (standard), 0÷1,25 MPa
- \* Maximum inlet pressure: 16 Bar (1,60 MPa).
- \* Temperature range: 5÷50°C (41÷122°F).
- \* Max. torque inserts G1/8" IN-OUT: 20 N·m.
- \* Max. torque inserts G1/4" IN-OUT: 25 N·m.
- \* Reference flow rate (P=6,3 Bar - Δp=1 Bar): 450 NI/min.
- \* Weight: 0,100 Kg.

FLOW CHARTS  
INLET PRESSURE = 1 MPa(10 Bar)

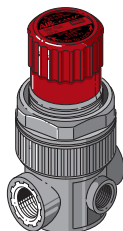


### Guide to references



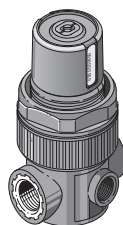
For Non-relieving regulators (i.e. for water) please call - 02 9679 8844

#### Microregulator "39 MR"



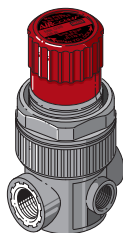
CODE	
39 MR 1 02	_____
39 MR 1 04	_____
→ 39 MR 1 08	_____
39 MR 1 12	_____
39 MR 2 02	_____
→ 39 MR 2 04	_____
39 MR 2 08	_____
39 MR 2 12	_____

#### Microregulator "not adjustable"



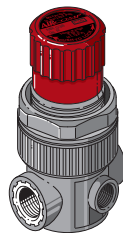
Microregulators with pre-set pressure and fixed knob not adjustable.

#### Microregulator "39 MR FA"



CODE	
39 MR 1 02 FA	_____
39 MR 1 04 FA	_____
→ 39 MR 1 08 FA	_____
39 MR 1 12 FA	_____
39 MR 2 02 FA	_____
39 MR 2 04 FA	_____
→ 39 MR 2 08 FA	_____
39 MR 2 12 FA	_____

#### Microregulator "39 MR SR"

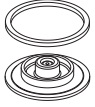


CODE	
39 MR 1 02 SR	_____
39 MR 1 04 SR	_____
→ 39 MR 1 08 SR	_____
39 MR 1 12 SR	_____
39 MR 2 02 SR	_____
39 MR 2 04 SR	_____
→ 39 MR 2 08 SR	_____
39 MR 2 12 SR	_____

→ Standard version

### Spare parts

#### Diaphragm complete



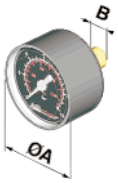
CODE	LINE	VERSION
C39.00.00009	039	RELIEVING
C39.00.00010	039	NON RELIEVING

#### Regulation spring



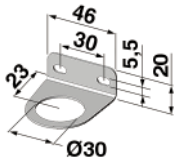
CODE	LINE	SET REGULATION
A38.00.00039	039	-0 Bar
A38.00.00040	039	-0 Bar
A38.00.00020	039	-0 Bar
A38.00.00021	039	-0.2 Bar

#### Gauge



CODE	Bar	Psi	A	B	CH.
A38.00.00026	0÷12	0÷175	40	G1/8"	14
A38.00.00055	0÷6	0÷85	40	G1/8"	12

#### Bracket



CODE
C38.00.00069

#### Plug G1/8"



CODE	LINE
B38.00.00018	039